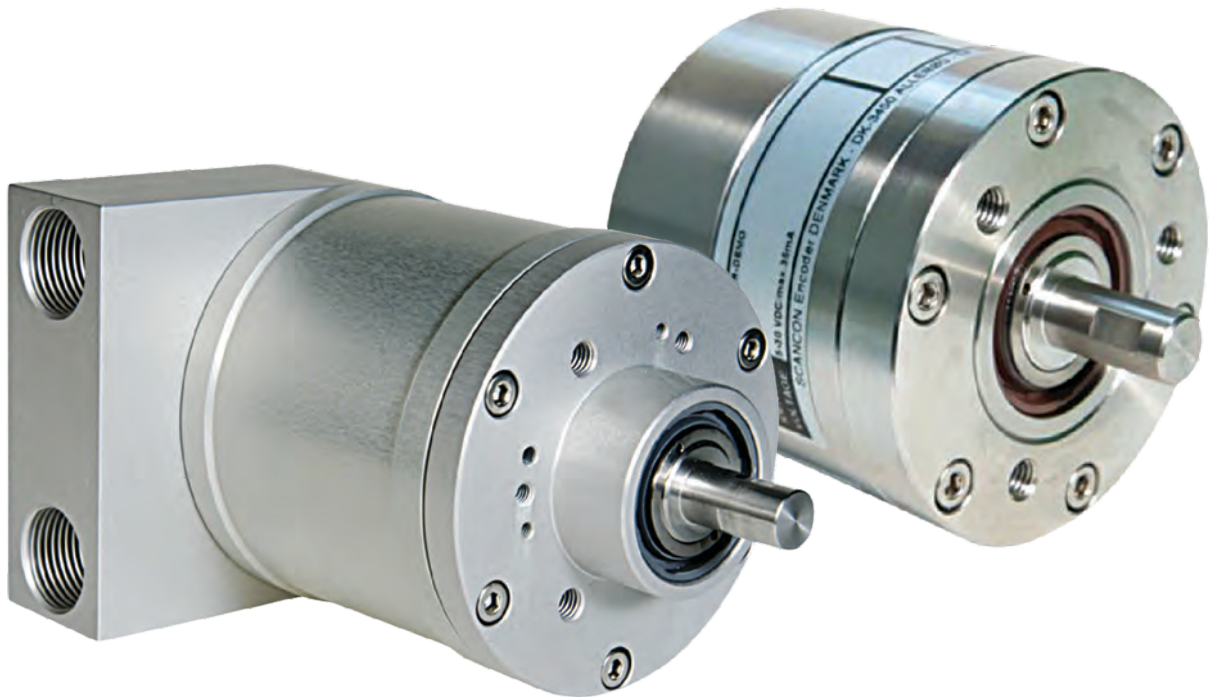




SCANCON

Industrial Encoders

ATEX Certified Encoders



ATI Systems
Committed to Quality

Head Office

011 383 8300

International: +27 11 383 8300

sales@atisystems.co.za - www.atisystems.co.za

159 Galjoen Rd, Wadeville, Germiston





REXM-A-SR

ATEX Solid Shaft Incremental Encoders

Part No.	Description
REXM-A-SR	This AISI 303 Stainless Steel shaft encoder is an industry standard in mining operations.
REXM-A-SA	This AISI 316 Stainless Steel shaft encoder is an industry standard in mining operations.



REXM-H-SR

ATEX Hollow Shaft Incremental Encoders

Part No.	Description
REXM-H-SR	The AISI 303 Stainless Steel hollow shaft version of the 2REXM-A-SR encoder, it is designed for harsh mining environments.
REXM-H-SA	The AISI 316 Stainless Steel hollow shaft version of the 2REXM-A-SR encoder, it is designed for harsh mining environments.



EXME-A-VA

ATEX Solid Shaft Absolute Encoders

Part No.	Description
EXME-A-VA	This ø78 mm AISI 303 Stainless Steel absolute shaft encoder is available with SSI, Profibus, CANOpen, or DeviceNet protocol.



EXME-H-VA

ATEX Hollow Shaft Absolute Encoders

Part No.	Description
EXME-H-VA	This ø78 mm AISI 303 Stainless Steel absolute hollow shaft encoder is available with SSI, Profibus, CANOpen, or DeviceNet protocol.

