

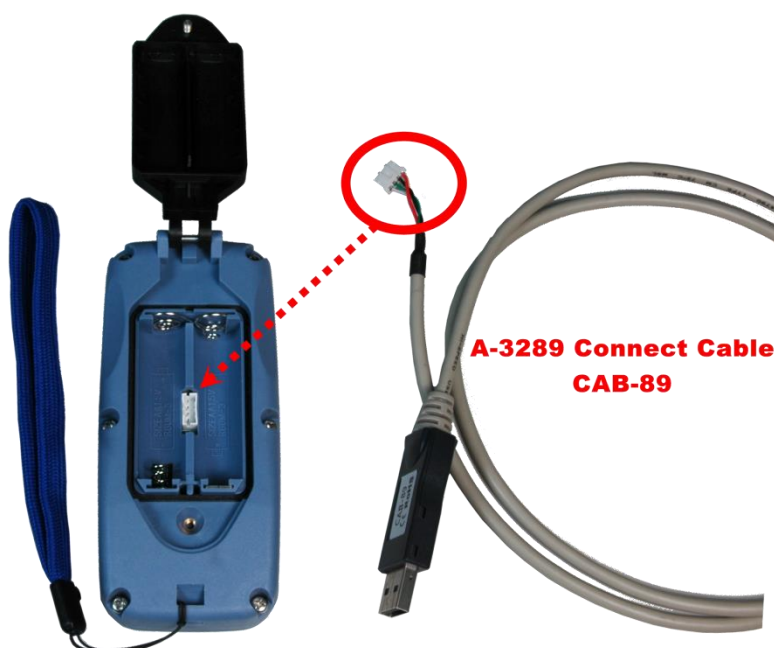
## Yottacontrol A-3289 WiFi Transmitter Quick Start

The Yottacontrol A-3289 WiFi Transmitter had a two-way communication to communicate with the Yottacontrol A-52 WiFi series controller.

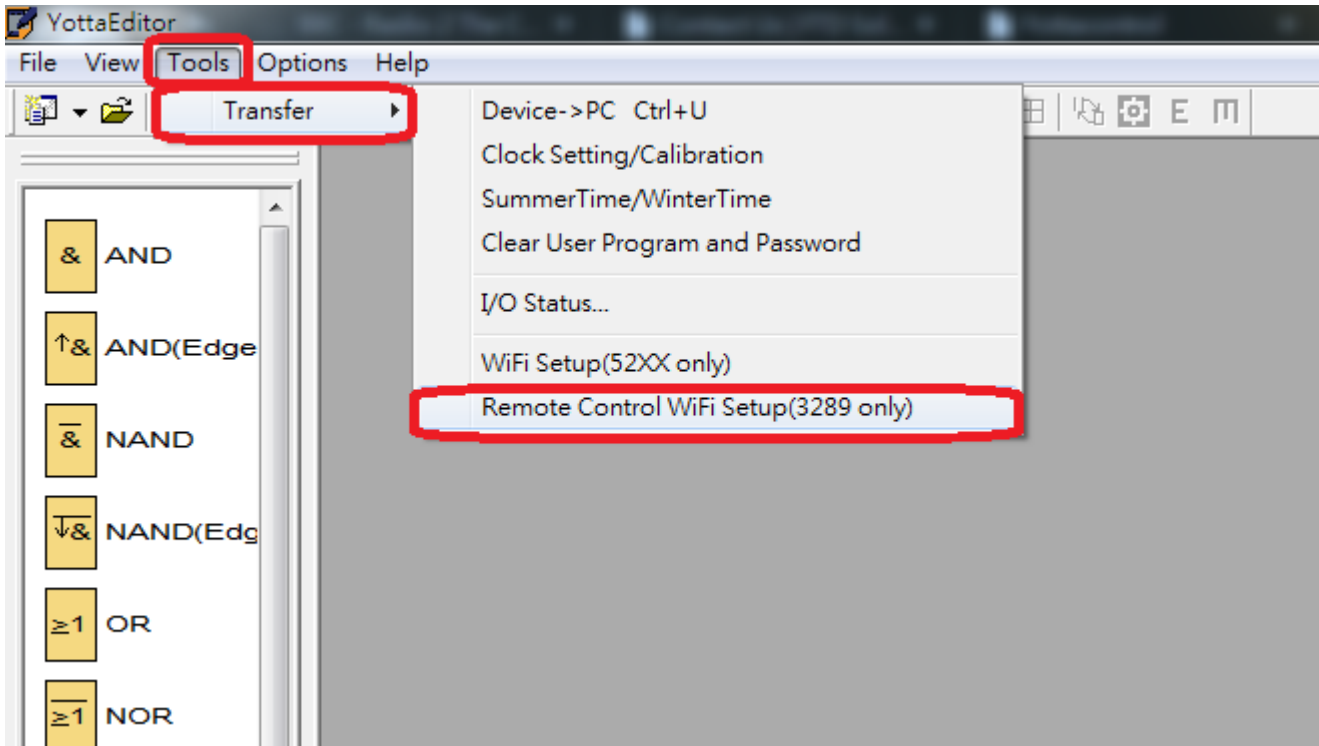


Before the regular use, must finish the related setup process. And prepare below items to finish the setup.

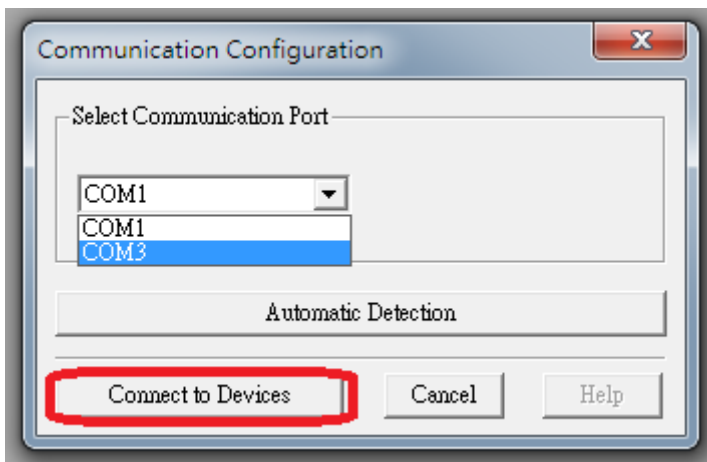
1. Download and install the A-3289 connect cable **CAB-89** driver from below web link.  
<http://www.yottacontrol.com/download/CAB89.rar>
2. Prepare A-3289 and CAB-89 cable.
3. Open the A-3289 rear cover and use the CAB-89 to link the A-3289 and the PC. (Remove the battery)



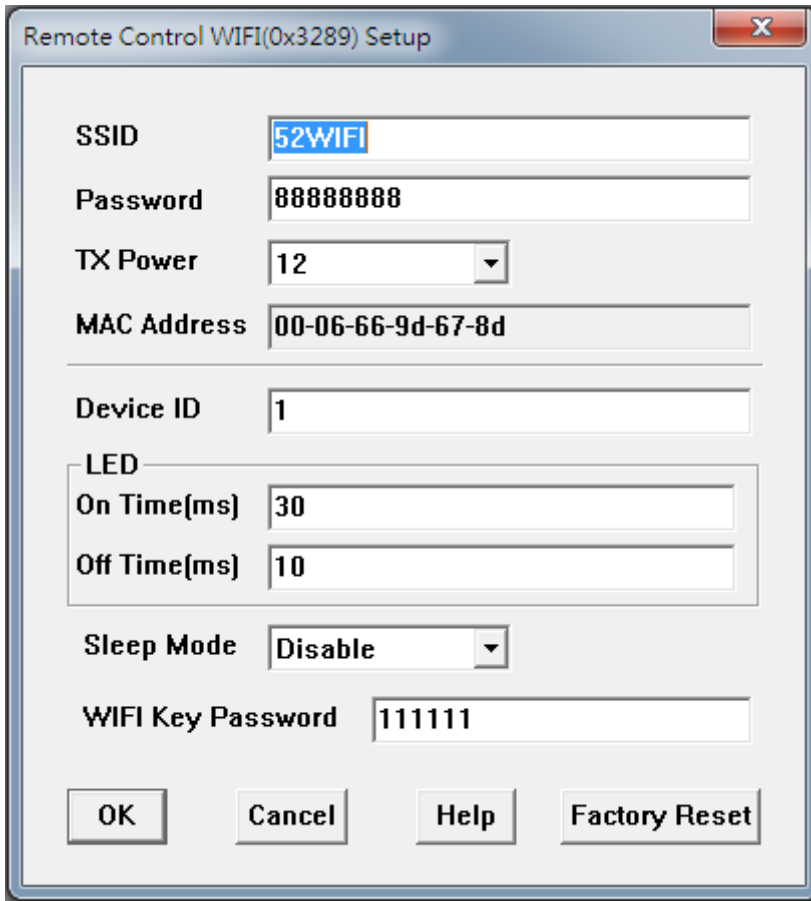
4. Open the YottaEdit software ([web link](#)).
5. Click the Tools -> Transfer -> Remote Control WiFi Setup (3289 only)



6. Choose the related communication port and click Connect to Devices.



7. Fill in A-3289's communication parameter. Note, the communication parameter must be the same as A-52 WiFi series controller.



Remote Control WIFI(0x3289) Setup

SSID: 52WIFI

Password: 88888888

TX Power: 12

MAC Address: 00-06-66-9d-67-8d

Device ID: 1

LED

On Time(ms): 30

Off Time(ms): 10

Sleep Mode: Disable

WIFI Key Password: 111111

OK Cancel Help Factory Reset

Parameter indication:

**SSID:** Type the A-52 WiFi controller's SSID

**Password:** Type the A-52 WiFi controller's password

**TX Power:** Range 1-12, the initial setting is 12 (0: weak~12: strong)

**Device ID:** Range 1-7. You must set the Device ID for different value to communicate with the A-52 WiFi controller for avoiding ID conflict.

**LED Spark Time:** On/Off ms.

**Sleep mode:** During the Sleep period, if not press the A-3289's button. The A-3289 will auto power-off.

**WiFi Key Password:** You can set up the A-3289's Power-On password for security condition. The Password is used the 1~6 button (max 6 numeric). When power-on, if press the wrong password, the A-3289 will not work. And Led Indicator will spark green & red.

8. Press OK, done.

### LED Indication

**Green & Red spark:** When power on, the A-3288 need to press the password. When finish, press the START.

**Green:** Success to connect.

**Red:** disconnect.