

OPTIONAL EQUIPMENT

13

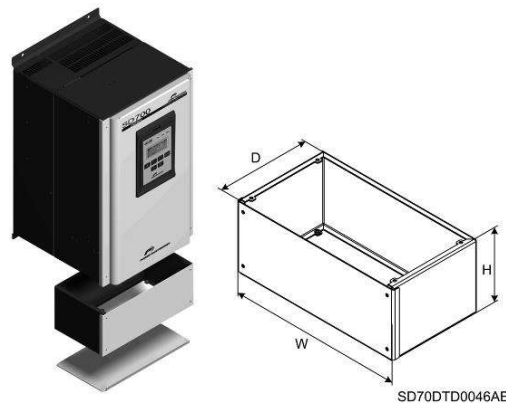
Accessories

CODE	DESCRIPTION
SD75ET	Profinet Communication Board.
SD75PB	Profibus Communication Board.
SD75CO	CAN Open Communication Board.
SD75EC	Encoder Board. It allows connecting up to 2 differential Encoders (one of them for the user and the other one for the vector control) working from 5 to 24VDC, according to the requirements.
SD75DIO	Digital Inputs / Outputs Expansion Board. It allows increasing the number of inputs and outputs of the drive. It includes: <ul style="list-style-type: none"> • 5 Programmable Digital Inputs optically isolated • 5 Digital Outputs (Relays)
SD75AIO	Analogue Inputs / Outputs Expansion Board. It allows increasing the number of inputs and outputs of the drive. It includes: <ul style="list-style-type: none"> • 2 Programmable Analogue Input • 2 Programmable Analogue Output
SD75FO	Fiber Optic Board. It allows communication between multiple drives in a master slave configuration.
SD75PT	PT100 Thermal Probe Board.
B150	Dynamic Braking Unit. (For further information, see section "Dynamic Braking Unit B150").
SD75DE3	Kit 3 meters Extender for Display.
SD75TD	Tactile display 4,3".

EN

Extension Box

FRAME	CODE	Dimensions (mm)		
		W	H	D
1	SD75EB1	189	122	161
2	SD75EB2	295	122	161
3	SD75EB3	300	151	168



SD70DTD0046AE

Dimensions for Extension Box

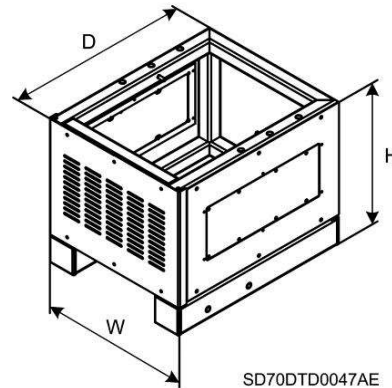
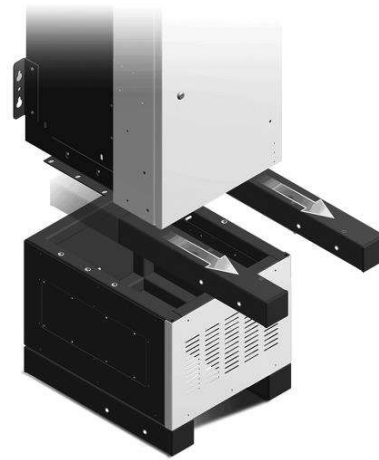
Plinths

FRAME	CODE	Dimensions (mm)			Total Drive Height (mm)
		W	H	D	
4	SD75PL0417	320	464	438.5	1712
5	SD75PL0520	431	413.5	529	2000
	SD75PL0522	431	613.5	529	2200
6	SD75PL0620	786	413.5	529	2000
	SD75PL0622	786	613.5	529	2200
7	SD75PL0720	1132	413.5	529	2000
	SD75PL0722	1132	613.5	529	2200
8	SD75PL0820	1482	413.5	529	2000
	SD75PL0822	1482	613.5	529	2200
9	SD75PL0920	3 x SD75PL0620			2000
	SD75PL0922	3 x SD75PL0622			2200
10	SD75PL1020	3 x SD75PL0720			2000
	SD75PL1022	3 x SD75PL0722			2200
11	SD75PL1120	3 x SD75PL0820			2000
	SD75PL1122	3 x SD75PL0822			2200

Code Explanation: SD75PL0520

SD75	PL05	20
SD750 Series	Plinth for Frame 5	Total Height 2000mm

Dimensions for Plinths

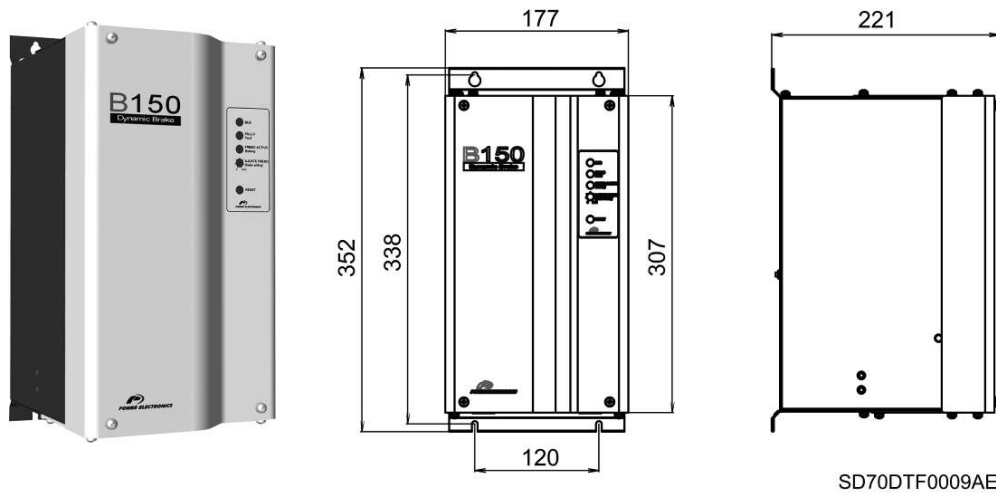


SD70DTD0047AE

Dynamic Braking Unit B150

The Dynamic brake permits to control the regenerated energy for series SD750 (integrated in frames 1 and 2). B150 dynamic brake activates an IGBT to discharge the DC bus with external resistors when the DC voltage overpasses a pre-set value. This activation signal can also be sent by the drive in slave mode from the common fiber optic port included in the control board.

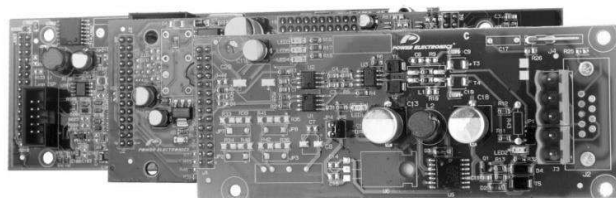
The B150, with reduced dimensions and high reliability, is the main power-switching device of such dynamic braking systems.



REFERENCE	VOLTAGE	CURRENT (A)		MINIMUM RESISTANCE RATING (Ω)	DIMENSIONS (MM)			WEIGHT
		MAXIMUM	CONTINUOUS		W	D	H	
B150	400Vac - 500Vac	300A	150A	2.4 Ω	177	221	352	7 kg

Communication boards

SD750 family is compatible with the most commonly used communication protocols (Profibus-DP,



SD70ITR0031A

Profinet, Modbus TCP, Ethernet IP, CAN Open, Field Bus, etc.), thanks to its optional boards.