



LPZ P1B502ZA



LPZ P2B801ZA



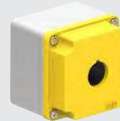
LPZ P3A8



LPX CB01



LPX CB10



LPZ M1A5



LPZ M1A5P



LPZ M5A8



LPZ M4A8



LPZ M2A8



LPZ M6E8



### Polycarbonate pushbutton control stations

IP66, IP67, IP69K

- New styling with incorporated anti-rotation facility for actuators
- M16 or M20/25 cable gland knock-outs on all sides and base
- Easy wiring with internal contact identification on cover and on base
- Contact blocks and lamp modules are base mounted with screw terminals facing forward

type	button colour	contact	cover colour	description	dimensions (mm) (H) (W) (D)		
------	---------------	---------	--------------	-------------	--------------------------------	--	--

### Complete pushbutton stations

#### 1 hole pushbutton stations

LPZ P1B801ZA	green	1 x NO	grey	flush pushbutton station	72	72	56
LPZ P1B802ZA	red	1 x NC	grey	extended pushbutton station	72	72	56
LPZ P1B501ZA	red	1 x NC	yellow	spring ret mushroom station	72	72	56
LPZ P1B502ZA	red	1 x NC	yellow	latch mushroom twist release	72	72	56

#### 2 hole pushbutton stations

LPZ P2B801ZA	green	1 x NO	grey	flush pushbutton station	117	72	56
	red	1 x NC	grey	extended pushbutton station			

LPZ P2B802ZA*	green	1 x NO	grey	flush pushbutton	151	72	56
	red	1 x NC	grey	latch mushroom twist release			

\*Taller housing (H) 151 mm to accommodate padlock shroud LPX AU158 (see page D-5)

#### 3 hole pushbutton stations

LPZ P3B802ZA	green	1 x NO	grey	flush pushbutton	151	72	56
	red	1 x NC	grey	extended pushbutton			
	green	1 x NO	grey	flush pushbutton			

### Empty enclosures (without actuators and contact blocks)

IP66, IP67, IP69K

type	holes	rows	cover	description	(H)	(W)	(D)
LPZ P1A5	1 hole	1	yellow	empty polycarb pushbutton station	72	72	56
LPZ P1A8	1 hole	1	grey	empty polycarb pushbutton station	72	72	56
LPZ P2A8	2 hole	1	grey	empty polycarb pushbutton station	117	72	56
LPZ P3A8	3 hole	1	grey	empty polycarb pushbutton station	151	72	56
LPZ P4A8	4 hole	1	grey	empty polycarb pushbutton station	186	72	56
LPZ P5A8	5 hole	1	grey	empty polycarb pushbutton station	220	72	56
LPZ P6A8	6 hole	1	grey	empty polycarb pushbutton station	256	72	56

### Base mounting contact blocks and indicating modules for above stations

LPX CB10	green	1 x NO		base mount screw terminal contact block for above stations
LPX CB01	red	1 x NC		base mount screw terminal contact block for above stations

LPX LPBB*		* 12-30 VAC/DC		base mount LED integrated lamp module for above stations
LPX LPBM*		* 185-265 VAC		base mount LED integrated lamp module for above stations

\* Replace with: 3 (green) / 4 (red) / 5 (yellow) / 6 (blue) / 8 (white) - for colours

Note: Base mounting contact blocks are not suitable for push on - push off actuators.

### Metallic control stations (without actuators and contact blocks)

IP66, IP67

- Enclosures made of aluminium alloy suitable for pushbuttons, selector switches and pilot lights
- Cable entry Ø21 mm (for M20 or PG13.5 cable glands) - no cable entry for 8/12/16 way

LPZ M1A5	1 hole	1	yellow	industrial metal pushbutton station	80	80	73
LPZ M1A5P	1 hole	1	yellow	p/button station (with half shroud)	80	80	73
LPZ M1A8	1 hole	1	grey	industrial metal pushbutton station	80	80	73
LPZ M2A8	2 hole	1	grey	industrial metal pushbutton station	130	80	73
LPZ M3A8	3 hole	1	grey	industrial metal pushbutton station	170	80	73
LPZ M4A8	4 hole	1	grey	industrial metal pushbutton station	170	80	73
LPZ M5A8	5 hole	1	grey	industrial metal pushbutton station	230	80	73
LPZ M6A8	6 hole	1	grey	industrial metal pushbutton station	230	80	73
LPZ M8CA8	8 hole	2 x 4	grey	industrial metal pushbutton station	160	160	90
LPZ M12CA8	12 hole	3 x 4	grey	industrial metal pushbutton station	170	190	90
LPZ M16CA8	16 hole	4 x 4	grey	industrial metal pushbutton station	190	250	90

### Empty metallic housings (without any holes)

IP66, IP67

LPZ M1E8	-	-	grey	empty aluminium alloy housing only	80	80	73
LPZ M2E8	-	-	grey	empty aluminium alloy housing only	130	80	73
LPZ M3E8	-	-	grey	empty aluminium alloy housing only	170	80	73
LPZ M5E8	-	-	grey	empty aluminium alloy housing only	160	160	90
LPZ M6E8	-	-	grey	empty aluminium alloy housing only	170	190	90
LPZ M7E8	-	-	grey	empty aluminium alloy housing only	190	250	90