



Accessories

10048506-Draw-Wire-SL3015/GS130X1-15000



General Data

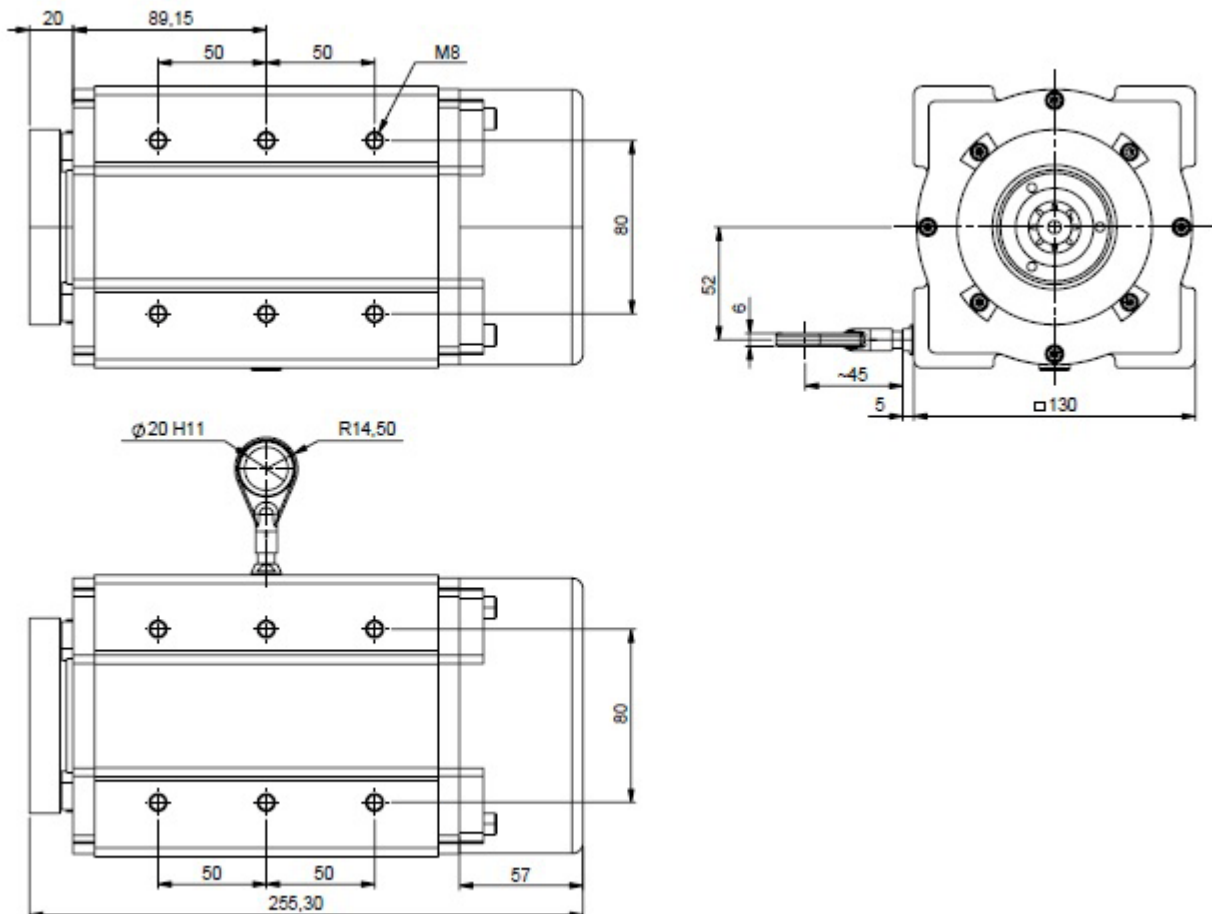
Intro	Draw Wires or Cable Pull adapters when combined with encoders enable to measure the linear position accurately and also communicate the position over the interface of your choice. All POSITAL draw wire adapters use a stainless steel measuring wire
Flange Type	Synchro - Solid Shaft
Flange Diameter	58 mm
Accuracy	± 0.10 % FSO
Repeatability	±0.05 % FSO
Measurement Length	15.00 m (49.21')
Draw Wire Housing Material	Anodized Aluminium
Wire Material	Stainless Steel
Wire Diameter	1.35 mm
Length per Revolution	334.1 mm
Max. Speed of Wire Displacement	6.0 m / s
Max Extension Force	21.0 N
Max. Angular Acceleration	8.0 g
Min Retraction Force	10.0 N
Wire Mounting	Eyelet
Shaft Diameter	6 mm

Data Sheet

Printed at 21-10-2021 09:10


Mechanical Data

Operating Temperature	-30°C to 70°C / -22°F to 158°F
Weight	5000 g


Contact


Contact Us



All dimension in [inch] mm. This drawing and the information contained is for general presentation purposes only. Please refer to the "Download" section for detailed technical drawings. © FRABA B.V., All rights reserved. We do not assume responsibility for technical inaccuracies or omissions. Specifications are subject to change without notice.