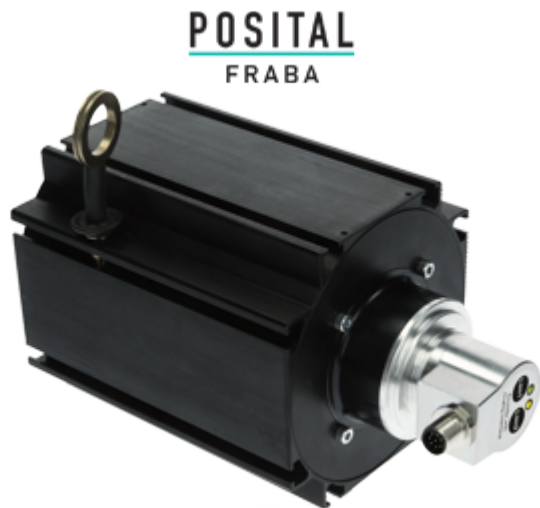



LINARIX Linear Sensor
LU0-ACP05-0413-AH30-PRM

General Data
General Data

Supply Voltage	8 - 32 VDC
Turn On Time	<500 ms
Operating Temperature	-20 °C (-4 °F) - +80 °C (+176 °F)
Weight	3055 g (6.74 lb)
Protection Class (Encoder)	IP64 / IP65
EMC: Emitted Interference	DIN EN 61000-6-4
EMC: Noise Immunity	DIN EN 61000-6-2

Mechanical Data

Max. Measurement Length	10.00 m (32.81')
Length per Revolution	315 mm
Wire Material	Coated Polyamide Stainless Steel
Wire Diameter	1.00 mm
Encoder Housing Material	Steel
Draw Wire Housing Material	Aluminum
Max. Speed of Wire Displacement	2.0 m / s
Max. Wire Acceleration	6.0 g
Max. Extension Force	21.0 N
Min. Retraction Force	8.0 N

Data Sheet

Printed at 21-10-2021 08:10



Actuation Lifetime	0.5 mio Cycles (Estimated based on ideal conditions)
Wire Mounting	Eyelet
Max. Wire Exit Angle	$\pm 3^\circ$
Sensor Data	
Technology	Magnetic ($\leq 0.09^\circ$)
Accuracy	± 0.01 % FSO
Repeatability	± 0.001 % FSO
Resolution [Encoder - Singleturn]	13 bit
Resolution [Encoder - Multiturn]	4 bit
Approx. Linear Resolution	38.5 μm
Output Code	Analog Current 4 - 20 mA
Resolution of Output	Max. 13 bits over entire measuring range (Fractional Turns - Resolution decreases less than 13 bits when measurements range is less than 90 degrees)
Multiturn Range	16 turn (default setting). User can use the scaling functionality to measure up to 65536 turns.
Interface	
Communication Interface	Analog Current
Manual Functions	Programmable Start and End point via Cable or Connector or Push Button
Outputs	
Outputs	
Electrical Data	
Current Consumption	Typical 20 mA @24 V (no load)
Max Load Resistance	500 Ω
Analog Accuracy	@ 20 mA = ± 20 μA (with an ideal power supply)
Settling Time	32 ms (from min value to max value jump)
Reverse Polarity Protection	Yes
Short Circuit Protection	Yes
MTTF	240.8 years @ 40 $^\circ\text{C}$

Electrical Connection

Data Sheet

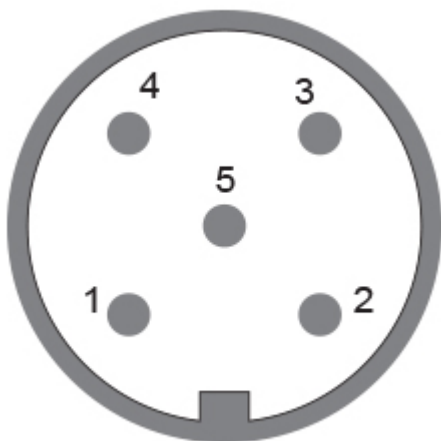
Printed at 21-10-2021 08:10



Connection Orientation	Radial
Connection Orientation (w.r.t Draw Wire)	Radial 3
Connector	M12, Male, 5 pin, a coded

Product Life Cycle

Product Life Cycle	Established
--------------------	-------------



Connection Plan

SIGNAL	CONNECTOR	PIN NUMBER
Power Supply	Connector 1	2
GND	Connector 1	3
Analog Output	Connector 1	1
Set1/Direction	Connector 1	5
Set2/Zero Set	Connector 1	4

Connector-View on Encoder Dimensional Drawing

[2D Drawing](#)

Accessories

Connectors & Cables

- POS M12 5pin-A Female+5m PUR Cable
- POS M12 5pin-A Female+2m PUR Cable
- POS M12 5pin-A Female+10m PUR Cable
- 10m PUR Cable, 5pin, A-Coded, f IP69K
- M12, 5pin A-Coded, Female

More

Displays

Data Sheet

Printed at 21-10-2021 08:10



AP22-D0 Analog Display (4 dig. o/p)
DiMod-A Analog Display

Got questions? Need an individual solution? We are here to help!



Contact Us

All dimension in [inch] mm. Encoder dimensions may vary depending on electrical interface and connector. This drawing and the information contained is for general presentation purposes only. Please refer to the "Download" section for detailed technical drawings. © FRABA B.V., All rights reserved. We do not assume responsibility for technical inaccuracies or omissions. Specifications are subject to change without notice.