

## Socket model ES 8

Relay socket type ES 8, for octal REL-OR with 2 PDT, screw connections, for mounting on NS 35/7,5.

Rated current / Rated voltage	12 A / 300 VAC (CSA)
	10 A / 300 VAC (UL)
Dielectric strength adjacent contact circuits	2500V
Dielectric strength coil contact circuits	2500V

### Connection data

Conductor cross section solid and stranded	min. 0,5 mm <sup>2</sup>
Conductor cross section solid and stranded	max. 2,5 mm <sup>2</sup>
Conductor cross section AWG	min. 26
Conductor cross section AWG	max 20
Stripping length	7 mm
Screw thread	M3

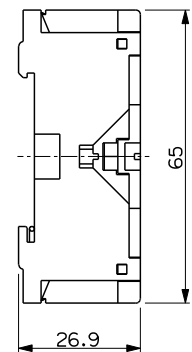
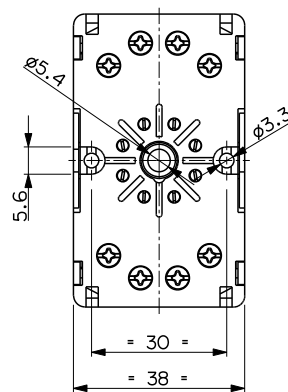
### General data

Width	38 mm
Height	65 mm
Color	Black
Ambient temperature (operation)	-25 °C ... 85 °C



**ES8CNER**  
Pack. 220 pcs

Connection diagrams  
see pages 370-371



## Socket model ES 11

Relay socket type ES 11, for undecal REL-OR with 3 PDT, screw connections, for mounting on NS 35/7,5.

Rated current / Rated voltage	12 A / 300 VAC (CSA)
	10 A / 300 VAC (UL)
Dielectric strength adjacent contact circuits	2500V
Dielectric strength coil contact circuits	2500V

### Connection data

Conductor cross section solid and stranded	min. 0,5 mm <sup>2</sup>
Conductor cross section solid and stranded	max. 2,5 mm <sup>2</sup>
Conductor cross section AWG	min. 20
Conductor cross section AWG	max 14
Stripping length	7 mm
Screw thread	M3

### General data

Width	38 mm
Height	65 mm
Color	Black
Ambient temperature (operation)	-25 °C ... 85 °C



**ES11CNER**  
Pack. 220 pcs

Connection diagrams  
see pages 370-371

