

## Socket model ES 15/2N

Relay socket model ES 15/2N for industrial relay with 2 PDT, 2/2 - level, screw connections, connection facility for input interference suppression modules.

Rated current / Rated voltage	12 A / 300V (CSA)
	10 A / 300V (UL)
Dielectric strength adjacent contact circuits	2500V
Dielectric strength coil contact circuits	2500V

### Connection data

Conductor cross section solid and stranded	min. 0,5 mm <sup>2</sup>
Conductor cross section solid and stranded	max. 2,5 mm <sup>2</sup>
Conductor cross section AWG	min. 20
Conductor cross section AWG	max 14
Stripping length	7 mm
Screw thread	M3

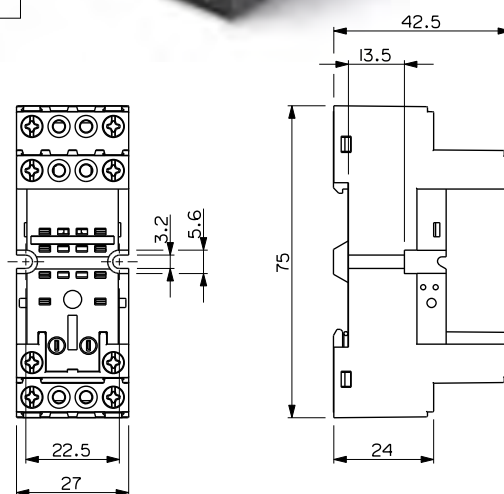
### General data

Width	27 mm
Height	75 mm
Color	Black
Ambient temperature (operation)	-25 °C ... 85 °C



**ES152NCNER**  
Pack. 220 pcs  
MOQ 1100 pcs

Connection diagrams  
see pages 370-371



## Socket model ES 15/3N

Relay socket model ES 15/3N for industrial relay with 3 PDT, 2/2 - level, screw connections, connection facility for input interference suppression modules.

Rated current / Rated voltage	12 A / 300V (CSA)
	10 A / 300V (UL)
Dielectric strength adjacent contact circuits	2500V
Dielectric strength coil contact circuits	2500V

### Connection data

Conductor cross section solid and stranded	min. 0,5 mm <sup>2</sup>
Conductor cross section solid and stranded	max. 2,5 mm <sup>2</sup>
Conductor cross section AWG	min. 20
Conductor cross section AWG	max 14
Stripping length	7 mm
Screw thread	M3

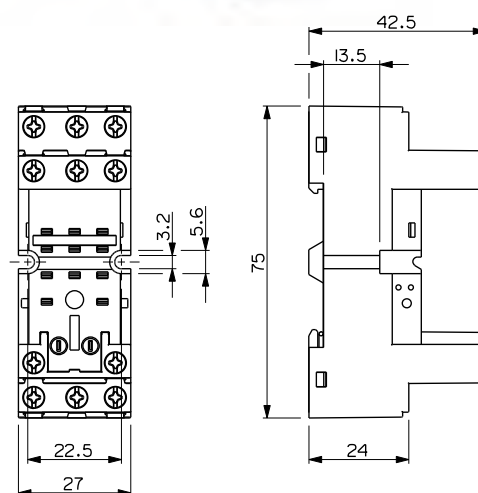
### General data

Width	27 mm
Height	75 mm
Color	Black
Ambient temperature (operation)	-25 °C ... 85 °C



**ES153NCNER**  
Pack. 220 pcs  
MOQ 1100 pcs

Connection diagrams  
see pages 370-371



Standard article    Article on request    MOQ: minimum quantity order