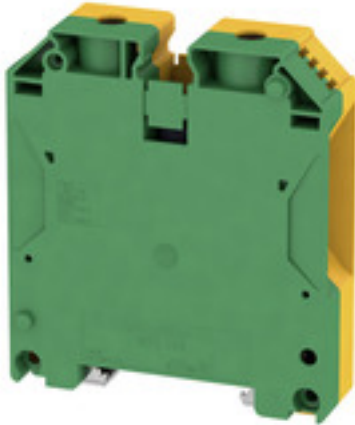


**W-Series**  
**WPE 70N/35****Weidmüller Interface GmbH & Co. KG**  
Klingenbergstraße 26  
D-32758 Detmold  
Germany  
Fon: +49 5231 14-0  
Fax: +49 5231 14-292083  
www.weidmueller.com**Product image****Klippon® Connect with clamping yoke Technology**

The high reliability and variety of designs of the terminal blocks with clamping yoke connections make planning easier and optimises operational safety. Klippon® Connect provides a proven response to a range of different requirements.

**General ordering data**

|            |  |
|------------|--|
| Type       | WPE 70N/35   |
| Order No.  | <a href="#">9512200000</a>   |
| Version    | PE terminal, Screw connection, 70 mm <sup>2</sup> , 8400 A (70 mm <sup>2</sup> ), Green/yellow |
| GTIN (EAN) | 4008 190403881   |
| Qty.       | 10 pc(s).  |

**W-Series**  
**WPE 70N/35**

**Weidmüller Interface GmbH & Co. KG**  
 Klingenbergstraße 26  
 D-32758 Detmold  
 Germany  
 Fon: +49 5231 14-0  
 Fax: +49 5231 14-292083  
 www.weidmueller.com

**Technical data**
**Dimensions and weights**

|                          |         |                 |            |
|--------------------------|---------|-----------------|------------|
| Width                    | 20.5 mm | Width (inches)  | 0.807 inch |
| Height                   | 75 mm   | Height (inches) | 2.953 inch |
| Depth                    | 85 mm   | Depth (inches)  | 3.346 inch |
| Depth including DIN rail | 86 mm   | Net weight      | 185.633 g  |

**Temperatures**

|                                  |   |                                  |               |
|----------------------------------|---|----------------------------------|---------------|
| Operating temperature range      | For operating temperature range see EC Design Test Certificate / IEC Ex-Certificate of Conformity | Storage temperature, max.        | 40 °C         |
| Storage temperature, min.        | 10 °C   | Storage temperature              | 10 °C...40 °C |
| Continuous operating temp., min. | -60 °C  | Continuous operating temp., max. | 130 °C        |

**Environmental Product Compliance**

|            |                |
|------------|----------------|
| REACH SVHC | Lead 7439-92-1 |
|------------|----------------|

**Material data**

|                           |       |        |              |
|---------------------------|-------|--------|--------------|
| Material                  | Wemid | Colour | Green/yellow |
| UL 94 flammability rating | V-0   |        |              |

**Rating data IECEx/ATEX**

|                                |   |                                 |                    |
|--------------------------------|---|---------------------------------|--------------------|
| Certificate No. (ATEX)         | DEMKO14ATEX1338U  | Certificate No. (IECEX)         | IECEXULD14.0005U   |
| Wire cross section max. (ATEX) | 70 mm <sup>2</sup>  | Wire cross section max. (IECEX) | 70 mm <sup>2</sup> |
| Operating temperature range    | For operating temperature range see EC Design Test Certificate / IEC Ex-Certificate of Conformity | Marking EN 60079-7              | Ex eb II C Gb      |
| Ex 2014/34/EU label            | II 2 G D  |                                 |                    |

**System specifications**

|                                     |   |                               |     |
|-------------------------------------|---|-------------------------------|-----|
| Version                             | Screw connection, With PE connection, in closed state | End cover plate required      | No  |
| Number of potentials                | 1   | Number of levels              | 1   |
| Number of clamping points per level | 2   | Number of potentials per tier | 1   |
| Levels cross-connected internally   | No  | PE connection                 | Yes |
| Rail                                | TS 35   | N-function                    | No  |
| PE function                         | Yes   | PEN function                  | Yes |

**Additional technical data**

|                          |                  |                             |                 |
|--------------------------|------------------|-----------------------------|-----------------|
| Explosion-tested version | Yes              | Installation advice         | when screwed in |
| Interlock                | for screw fixing | Number of similar terminals | 1               |
| Open sides               | closed           | Type of mounting            | when screwed in |

**CSA rating data**

|                               |                |                               |       |
|-------------------------------|----------------|-------------------------------|-------|
| Certificate No. (CSA)         | 200039-1581431 | Wire cross section max. (CSA) | 0 AWG |
| Wire cross section min. (CSA) | 6 AWG          |                               |       |

**W-Series**  
**WPE 70N/35**

**Weidmüller Interface GmbH & Co. KG**  
 Klingenbergstraße 26  
 D-32758 Detmold  
 Germany  
 Fon: +49 5231 14-0  
 Fax: +49 5231 14-292083  
 www.weidmueller.com

**Technical data****Conductors for clamping (rated connection)**

|   |                    |   |                    |
|---|--------------------|---|--------------------|
| Blade size  | S6 (DIN 6911)      | Clamping range, max.  | 95 mm <sup>2</sup> |
| Clamping range, min.  | 16 mm <sup>2</sup> | Clamping screw  | M 8                |
| Connection cross-section, stranded, max.  | 95 mm <sup>2</sup> | Connection cross-section, stranded, min.  | 16 mm <sup>2</sup> |
| Connection direction  | on side            | Gauge to IEC 60947-1  | B11                |
| Number of connections   | 2                  | Stripping length  | 22 mm              |
| Tightening torque, max.   | 12 Nm              | Tightening torque, min.   | 8 Nm               |
| Type of connection  | Screw connection   | Wire connection cross section AWG, max.   | AWG 0              |
| Wire connection cross section AWG, min.   | AWG 6              | Wire connection cross section, finely stranded, max.                                    | 70 mm <sup>2</sup> |
| Wire connection cross-section, finely stranded with wire-end ferrules DIN 46228/1, max. | 70 mm <sup>2</sup> | Wire connection cross-section, finely stranded with wire-end ferrules DIN 46228/1, min. | 16 mm <sup>2</sup> |
| Wire connection cross-section, finely stranded with wire-end ferrules DIN 46228/4, max. | 50 mm <sup>2</sup> | Wire connection cross-section, finely stranded with wire-end ferrules DIN 46228/4, min. | 16 mm <sup>2</sup> |
| Wire connection cross-section, finely stranded, min.                                    | 16 mm <sup>2</sup> | Wire connection cross-section, solid core, max.   | 16 mm <sup>2</sup> |
| Wire connection cross-section, solid core, min.   | 16 mm <sup>2</sup> |   |                    |

**PE rating data**

|  |                              |                              |     |
|--|------------------------------|------------------------------|-----|
| Rated short-time current                 | 8400 A (70 mm <sup>2</sup> ) | Centre screw on PE terminals | M 5 |
| Tightening torque range for fixing screw | 2.0...4.0 Nm                 | PEN function                 | Yes |

**Rating data**

|   |                    |  |         |
|---|--------------------|--|---------|
| Rated cross-section                         | 70 mm <sup>2</sup> | Rated voltage to adjoining terminal                  | 1,000 V |
| Standards                                   | IEC 60947-7-2      | Volume resistance according to IEC 60947-7-x         | 0.17 mΩ |
| Power loss in accordance with IEC 60947-7-x | 6.14 W             | Rated impulse withstand voltage to adjacent terminal | 8 kV    |
| Pollution severity                          | 3                  |  |         |

**UL rating data**

|  |        |  |       |
|--|--------|--|-------|
| Certificate No. (cURus)                    | E60693 | Conductor size Factory wiring max. (cURus) | 0 AWG |
| Conductor size Factory wiring min. (cURus) | 6 AWG  | Conductor size Field wiring max. (cURus)   | 0 AWG |
| Conductor size Field wiring min. (cURus)   | 6 AWG  |  |       |

**Classifications**

|             |             |            |             |
|-------------|-------------|------------|-------------|
| ETIM 6.0    | EC000901    | ETIM 7.0   | EC000901    |
| eClass 9.0  | 27-14-11-41 | eClass 9.1 | 27-14-11-41 |
| eClass 10.0 | 27-14-11-41 | UNSPSC     | 30-21-18-11 |

**Data sheet**

**W-Series  
WPE 70N/35**

**Weidmüller Interface GmbH & Co. KG**  
Klingenbergstraße 26  
D-32758 Detmold  
Germany  
Fon: +49 5231 14-0  
Fax: +49 5231 14-292083  
www.weidmueller.com

**Technical data**

**Approvals**

Approvals



ROHS Conform

**Downloads**

|   |   |
|---|---|
| Approval/Certificate/Document of Conformity | <a href="#">Attestation of Conformity</a><br><a href="#">IECEX Certificate</a><br><a href="#">EAC certificate</a><br><a href="#">INMETRO certificate</a><br><a href="#">DE_PT1002_20160414_263_ISSUE01.pdf</a><br><a href="#">ATEX Certificate</a><br><a href="#">Declaration of Conformity Terminals</a> |
| Brochure/Catalogue                          | <a href="#">CAT 1 TERM 16/17 EN</a>   |
| Engineering Data                            | <a href="#">EPLAN, WSCAD, Zuken E3.S</a>  |
| Engineering Data                            | <a href="#">STEP</a>  |
| User Documentation                          | <a href="#">NTI WDU/WPE 70N/35</a><br><a href="#">StorageConditionsTerminalBlocks</a><br><a href="#">Instruction</a>  |

**Safety note**

Safety notice [Safety Information](#)

**Data sheet**

**W-Series**  
**WPE 70N/35**

**Weidmüller Interface GmbH & Co. KG**  
Klingenbergstraße 26  
D-32758 Detmold  
Germany  
Fon: +49 5231 14-0  
Fax: +49 5231 14-292083  
[www.weidmueller.com](http://www.weidmueller.com)

**Drawings**

