



Continuous light element, yellow, 12-230 V AC/DC, 50 mm diameter, base BA 15d without light element

product brand name	SIRIUS	
product designation	Continuous light element	
design of the product	without light source	
<b>General technical data</b>		
type of voltage of the operating voltage	AC/DC	
operating voltage		
• at DC rated value	12 ... 230 V	
• at AC at 50 Hz rated value	12 ... 230 V	
• at AC at 60 Hz rated value	12 ... 230 V	
reference code according to EN 61346-2	P	
<b>Lamp</b>		
product component light source	No	
type of light source	filament lamp / LED	
design of the optical signal	continuous light	
socket design	BA 15d	
<b>Enclosure</b>		
height	67 mm	
width	52 mm	
outer diameter of the signal column element	50 mm	
material	PC	
color	yellow	
fastening method	Bayonet	
protection class IP	IP54	
<b>Ambient conditions</b>		
ambient temperature during operation	-20 ... +60 °C	
<b>Certificates/ approvals</b>		
General Product Approval	EMC	Declaration of Conformity

[Confirmation](#)



other

[Confirmation](#)

## Further information

Siemens has decided to exit the Russian market (see here).

<https://press.siemens.com/global/en/pressrelease/siemens-wind-down-russian-business>

Siemens is working on the renewal of the current EAC certificates.

Please contact your local Siemens office on the status of validity of the EAC certification if you intend to import or offer to supply these products to an EAC relevant market (other than the sanctioned EAEU member states Russia or Belarus).

Information on the packaging

<https://support.industry.siemens.com/cs/ww/en/view/109813875>

Information- and Downloadcenter (Catalogs, Brochures,...)

<https://www.siemens.com/ic10>

Industry Mall (Online ordering system)

<https://mall.industry.siemens.com/mall/en/en/Catalog/product?mlfb=8WD4200-1AD>

Cax online generator

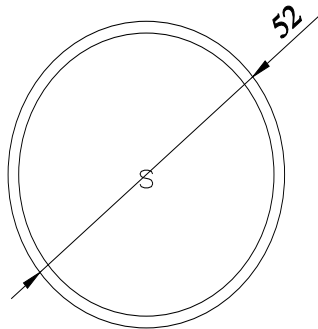
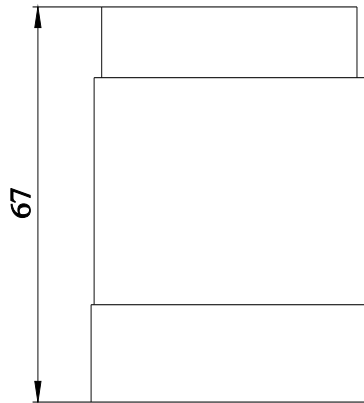
<http://support.automation.siemens.com/WW/CAXorder/default.aspx?lang=en&mlfb=8WD4200-1AD>

Service&Support (Manuals, Certificates, Characteristics, FAQs,...)

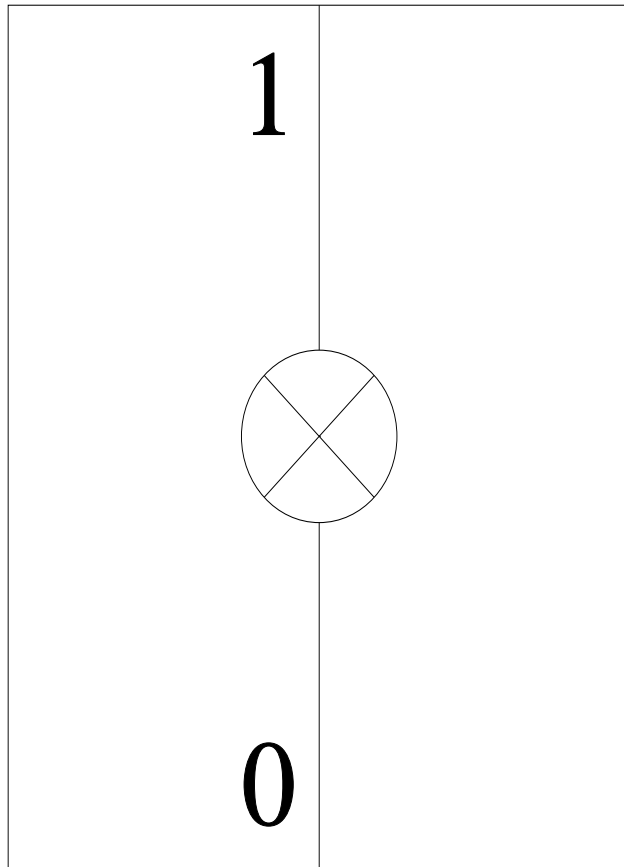
<https://support.industry.siemens.com/cs/ww/en/ps/8WD4200-1AD>

Image database (product images, 2D dimension drawings, 3D models, device circuit diagrams, EPLAN macros, ...)

[http://www.automation.siemens.com/bilddb/cax\\_de.aspx?mlfb=8WD4200-1AD&lang=en](http://www.automation.siemens.com/bilddb/cax_de.aspx?mlfb=8WD4200-1AD&lang=en)



**-P**



last modified:

2/25/2021 