

ACT20X-HDI-SDO-S

Weidmüller Interface GmbH & Co. KG
 Klingenbergstraße 26
 D-32758 Detmold
 Germany

www.weidmueller.com

Product image, Similar to illustration



The ACT20X HDI SDO S / 2HDI-2SDO-S isolating switch amplifiers are specially designed for recording NAMUR sensor signals and digital switching signals which originate from Ex zone 0.

Negative-switching (NPN) transistor outputs are used to transmit the signals to applications in the safe zone.

Integrated alarm contacts issue an alert in the event of a malfunction; this makes troubleshooting easier and increases system availability.

The rail mounted disconnect-switch amplifiers are optionally available in one- or two-channel versions.

With 11 mm width per channel, the devices need little space in the electrical cabinet.

General ordering data

Version	EX signal isolating converter, Ex-input: NAMUR sensor/switch, Safe-output: Optocoupler, 1-channel
Order No.	8965360000
Type	ACT20X-HDI-SDO-S
GTIN (EAN)	4032248784875
Qty.	1 pc(s).

Creation date May 25, 2022 9:49:17 AM CEST

Catalogue status 20.05.2022 / We reserve the right to make technical changes.

ACT20X-HDI-SDO-S

Weidmüller Interface GmbH & Co. KG

Klingenbergstraße 26

D-32758 Detmold

Germany

www.weidmueller.com

Technical data

Dimensions and weights

Depth	113.6 mm	Depth (inches)	4.472 inch
Height	119.2 mm	Height (inches)	4.693 inch
Width	22.5 mm	Width (inches)	0.886 inch
Net weight	170 g		

Temperatures

Storage temperature	-20 °C...85 °C	Operating temperature	-20 °C...60 °C
Humidity	0...95 % (no condensation)		

Probability of failure

SIL PAPER	SIL certificate	MTBF	215 Years
-----------	-----------------	------	-----------

Environmental Product Compliance

REACH SVHC	Lead 7439-92-1
------------	----------------

Input EX

Input frequency	0...5 kHz	Input resistance	1 kΩ
Output signal in case of wire break	< 0.1 mA, > 6.5 mA (in case of wire break)	Pulse duration	> 0.1 ms
Resistance	Series resistor 750Ω, Parallel resistor 15kΩ	Sensor	NAMUR sensor, according to EN60947-5-6, switch with or without RS, RP
Sensor supply	8 V DC / 8 mA	Trigger level high	> 2.1 mA
Trigger level low	< 1.2 mA	Type	intrinsically safe circuit

Digital output

Continuous current	80 mA	Function	Output = input, direct or inverse (configurable)
Max. switching frequency	≤ 5 kHz	Nominal switching voltage	30 V DC
Type	NPN-Transistor		

Alarm output

Alarm function	Line interruption at the input, Short circuit at input, No supply voltage, Device error	Continuous current	≤ 0.5 A AC / 0.3 A DC (safe zone), ≤ 0,5 A AC / 1 A DC (zone 2)
Nominal switching voltage	≤ 125 V AC / 110 V DC (safe area) ≤ 32 V AC / 32 V DC (zone 2)	Power rating	≤ 62.5 VA / 32 W (safe area) ≤ 16 VA / 32 W (Zone 2)
Type	Status relay, 1 NC (voltage-free)		

General specifications

Configuration	With FDT/DTM software	Humidity	0...95 % (no condensation)
NAMUR supply	8 V DC / 8 mA	Power consumption	≤ 1.1 W
Protection degree	IP20	Type of connection	Screw connection
Voltage supply	19.2...31.2 V DC		

Creation date May 25, 2022 9:49:17 AM CEST

Catalogue status 20.05.2022 / We reserve the right to make technical changes.

ACT20X-HDI-SDO-S**Weidmüller Interface GmbH & Co. KG**

Klingenbergstraße 26

D-32758 Detmold

Germany

www.weidmueller.com

Technical data**Insulation coordination**

EMC standards	DIN EN 61326, NE 21	Insulation voltage	2.6 kV (input / output)
Rated voltage	300 V		

Data for Ex applications (ATEX)

Current I_0	12 mA DC	Installation location	Device installed in safe area, zone 2
Marking	II (1) G [Ex ia Ga] IIC/IIB/ IIA, II (1) D [Ex ia Da] IIIC, I (M1) [Ex ia Ma] I	Power P_0	32 mW
Voltage U_0	10.6 V DC		

Safety-related basic specifications

Description of the "safe state"	High impedance	Device type	B
Diagnostic test interval	10 s	T_{proof}	5 Years
Total failure rate for safe detected failures (λ_{SD})	0 FIT	Hardware fault tolerance (HFT)	0
Safety category	SIL 2	Safe Failure Fraction (SFF)	92 %
Mean Time To Repair (MTTR)	8 h	Total failure rate for safe undetected failures (λ_{SU})	275 FIT
Total failure rate for dangerous detected failures (λ_{DD})	135 FIT	Total failure rate for dangerous undetected failures (λ_{DU})	36 FIT
Probability of outage PFH	$3.62 \times 10^{-8} \text{ h}^{-1}$	Demand mode	High
Demand rate	1,000 s		

Safety-related specifications Low demand mode

Average Probability of Failure on Demand (PFD_{avg})	1.58×10^{-4} ($T_{proof} = 1$ year), 3.17×10^{-4} ($T_{proof} = 2$ years), 7.92×10^{-4} ($T_{proof} = 5$ years)
--	---

Connection data

Type of connection	Screw connection	Tightening torque, min.	0.4 Nm
Tightening torque, max.	0.6 Nm	Clamping range, rated connection	2.5 mm ²
Clamping range, min.	0.25 mm ²	Clamping range, max.	2.5 mm ²
Wire connection cross section AWG, min.	AWG 26	Wire connection cross section AWG, max.	AWG 12

Guarantee

Time interval	3 years
---------------	---------

Classifications

ETIM 6.0	EC002653	ETIM 7.0	EC002653
ETIM 8.0	EC002653	ECLASS 9.0	27-21-01-20
ECLASS 9.1	27-21-01-20	ECLASS 10.0	27-21-01-20
ECLASS 11.0	27-21-01-20	ECLASS 12.0	27-21-01-20

ACT20X-HDI-SDO-S**Weidmüller Interface GmbH & Co. KG**

Klingenbergstraße 26

D-32758 Detmold

Germany

www.weidmueller.com

Technical data**Tender specification sheets**

Long specification

Short specification

Ex isolating switch amplifiers for Namur sensors, 1-channel isolating switch amplifiers in 22.5 mm width with an external power supply, to transmit and isolate Namur sensor signals from Ex zones 0, 1, 2 into the safe zone.

On the output side there is an NPN switching transistor and a common alarm contact (relay/"a" contact) for status or error messages.

The component can be configured using standard FDT/DTM software.

**Add-on housing for TS35 DIN rail installation
Dimensions: L/W/H
119.2/ 22.5/ 113.6
screw connection/
nominal cross-section
2.5 mm²**

**Protection degree:
IP20
Input**

**NAMUR sensor
according to EN 60947
8**

**VDC / 8 mA sensor
power supply
0 to
5 kHz input frequency
wire-**

**break detection
Output**

**NPN
transistor
30
VDC @ 80 mA**

**5 kHz switching
frequency
< 2,**

**5 VDC Spannungsfall
Alarm output relay 1
NO contact**

**250
VAC / 30 VDC @ 2A safe
zone**

**32
VAC @ 0.5 A/ 32 VDC @
1 A zone 2**

**Auxiliary
power
19...31.2 VDC
Power loss approx. 1.8
W**

Creation date May 25, 2022 9:49:27 AM CEST

**temperature range -20
°C to +60 °C**

Catalogue status 20.05.2022 / We reserve the right to make technical changes.

**Secure isolation
EN 61010-2**

ACT20X-HDI-SDO-S

Weidmüller Interface GmbH & Co. KG
 Klingenbergstraße 26
 D-32758 Detmold
 Germany

www.weidmueller.com

Technical data

Approvals

Approvals



Approvals	DNVGL;
ROHS	Conform
UL File Number Search	E337701

Downloads

Approval/Certificate/Document of Conformity	Certification SIL Certification DNV GL Certification ATEX Certification IECEX Declaration of Conformity
Engineering Data	CAD data – STEP
Engineering Data	EPLAN, WSCAD
Software	Library and function block – WI-Manager, DTM-Library for online installation V.1.2.3 Release notes for Weidmueller FDT-DTM Software version 1.2.3.
User Documentation	Instruction sheet Safety Manual for SIL application Handbuch ACT20X- Serie, deutsch Manual ACT20X- series, english 20210120 Security Advisory WI-Manager affected by MM Software fdt CONTAINER vulnerability
Catalogues	Catalogues in PDF-format
Brochures	

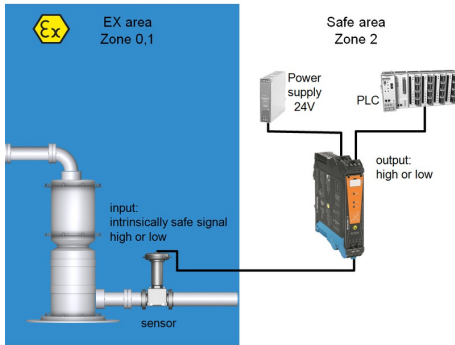
ACT20X-HDI-SDO-S

Weidmüller Interface GmbH & Co. KG
 Klingenbergstraße 26
 D-32758 Detmold
 Germany

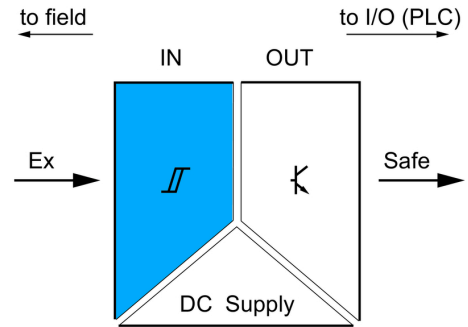
www.weidmueller.com

Drawings

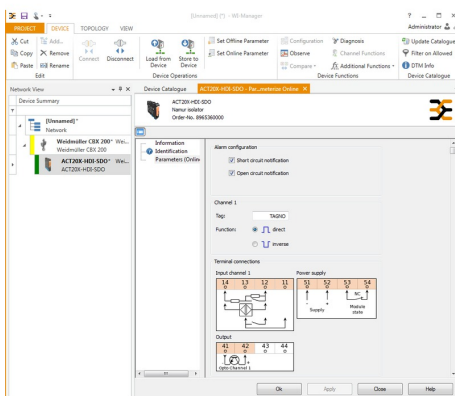
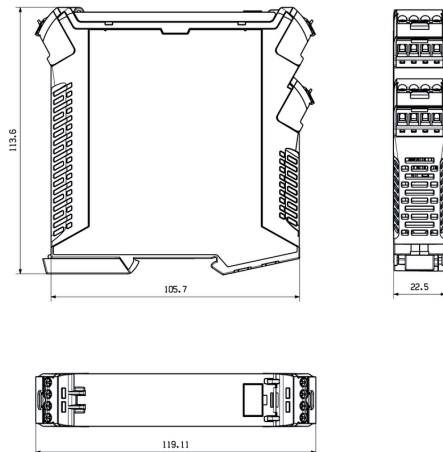
Application



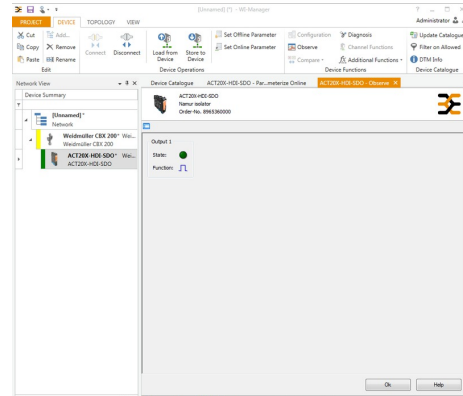
Block diagram



Dimensioned drawing



screenshot of configuration with FDT2 / DTM software



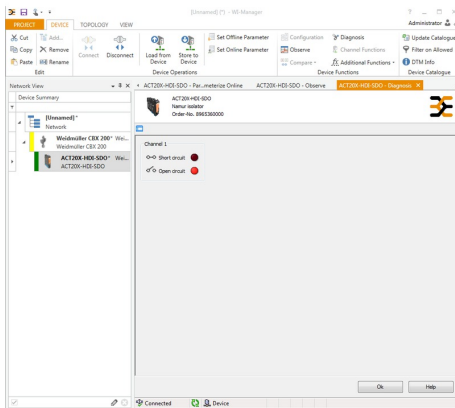
screenshot of "observe" with FDT2 / DTM software

ACT20X-HDI-SDO-S

Weidmüller Interface GmbH & Co. KG
 Klingenbergstraße 26
 D-32758 Detmold
 Germany

Drawings

www.weidmueller.com



screenshot of "diagnosis" with FDT2 / DTM software

Connection diagram

