



# Datalogger

Communication  
interfaces

**new**



DATALOG H80



DATALOG H60

## The solution for

- > Industry
- > Building
- > Infrastructure
- > Local authority



## Strong points

- > Easy to install
- > Reliable collection and transmission
- > Advanced functions

## Expert Services

- > Study, definition, advice, commissioning, maintenance and training... Our experts "Expert Services" offer complete support for the success of your project.

## Function

DATALOG H60 and H80 dataloggers associated with Socomec wireless interfaces enable you to create a smart energy data communication network in order to:

- Remotely and automatically read multi-fluid energy meters and multi-function meters, isolated or not.
- Pool, secure, store and provide the data to a computer application.
- Connect your meters and multi-function measurement units in a 2G/3G/GPRS network.

## Advantages

### Easy to install

- Quick installation on DIN rail or door mounting.
- Compact.
- Remote configuration.
- Configuration services (SOCOMECE services).

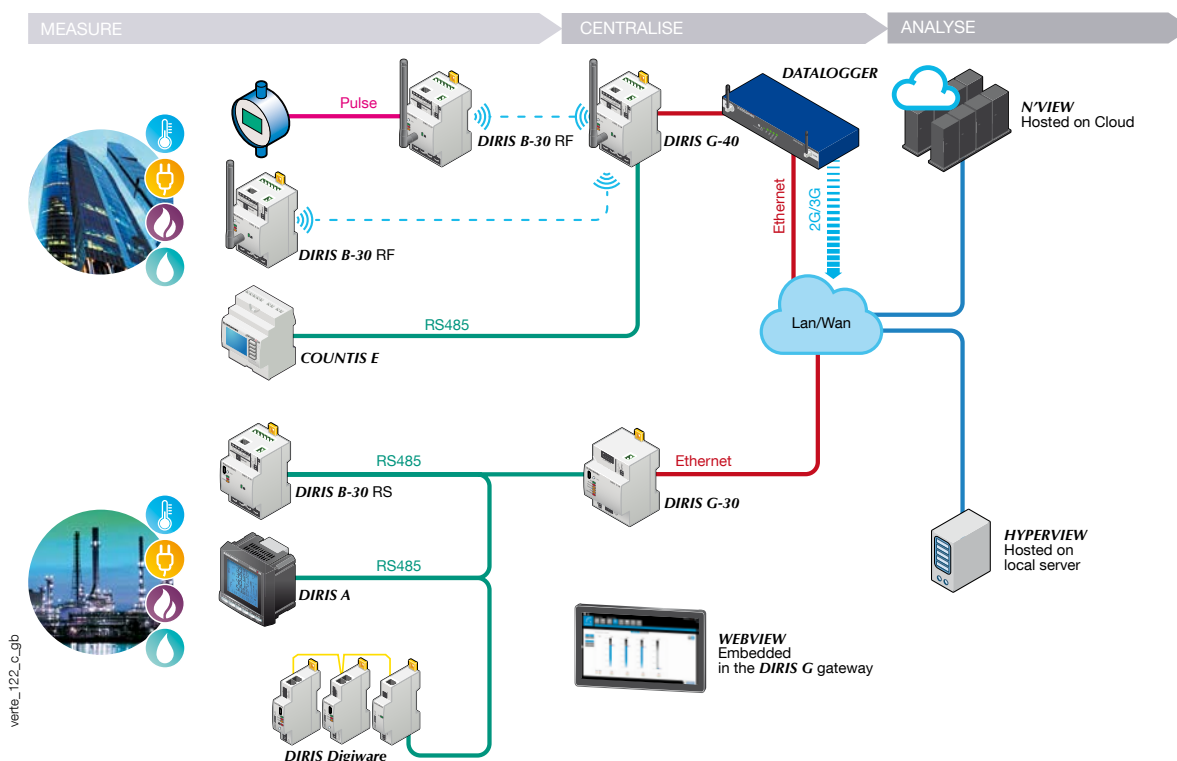
### Reliable collection and transmission

- Configurable collection frequency for each energy and multi-function meter.
- Secure, regular transmission (daily, weekly, etc.).
- Multiple communication protocols (Modbus RTU/TCP, Wireless M-Bus, HTTP(s), FTP(s)).
- Collection interfaces: Ethernet - RS232/485 or Wireless.
- Transmission interface: Ethernet or 2G/3G/GPRS.

### Advanced functions

- Extended data storage capacity (1 year for index data and 2 months for load curves).
- Auto-detects meters and measuring equipment.
- Sends regular activity reports.
- Event alerts (communication errors, data quality, remote server connection).

## The SOCOMEC communicating energy-efficiency solution



## Specifications

|                                | DATALOG H60                      | DATALOG H80           |
|--------------------------------|----------------------------------|-----------------------|
| <b>Input/output interfaces</b> |                                  |                       |
| Input                          | 3 digital or pulse inputs        |                       |
| Output                         | 1 digital output (relay)         |                       |
| <b>Serial interfaces</b>       |                                  |                       |
| Input                          | 1 port (Modbus)                  |                       |
| Output                         | 1 port (Modbus or M-Bus)         |                       |
| <b>Wireless interface</b>      |                                  |                       |
| Wireless M-Bus                 | 868.3 - 868.95 MHz               |                       |
| <b>Network interface</b>       |                                  |                       |
| Ethernet                       | 1 10/100 Mb port                 | 2 10/100/1000 Mb port |
| GSM/GPRS                       | 850/900/1800/1900 MHz            | 850/900/1800/1900 MHz |
| 3G                             | 900/2100 MHz                     | 900/2100 MHz          |
| <b>Protocols</b>               |                                  |                       |
| Data collection                | Modbus RTU and TCP/Wireless Mbus | Ethernet/Modbus TCP:  |
| Data transmission              | FTP                              | FTP(s)/ HTTP(s)       |
| <b>Configuration</b>           |                                  |                       |
| Local                          | Yes                              | Yes                   |
| Distant                        | by text message                  | by FTP                |

## References

|  |                  |
|--|------------------|
| <b>Datalogger</b>                        | <b>Reference</b> |
| DATALOG H60 (power supply included)      | 4854 0001        |
| DATALOG H80 (without 3G connection)      | 4854 0010        |
| DATALOG H81 (with 3G connection)         | 4854 0011        |
| <b>DATALOG H60 accessory description</b> | <b>Reference</b> |
| 5 m remote antenna extension             | 4854 0105        |
| 10 m remote antenna extension            | 4854 0110        |
| 20 m remote antenna extension            | 4854 0120        |