



ACCESSORI / ACCESSORIES
ACCESSOIRES (TWS - miniTWS - babyTWS)



BS

BS 27760 27691

kg
0,03




PR 27761 27692
kg 0,03

KIT 27764 27695
kg 0,06

KIT SS 27765 27845
kg 0,14

KIT SS L20 27766 27846
kg 0,18

KIT SS L40 27767 27847
kg 0,28



BP1 27762 27693
kg 0,04

BP2 27763 27694
kg 0,05



SB

SB 33357 33358

kg
0,14

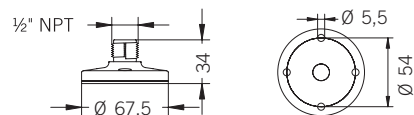


M16

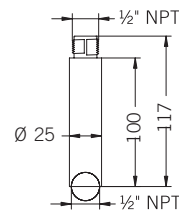
M16 27777 27778

kg
0,10

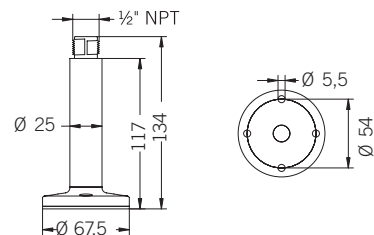
BS
Base piana per montaggio superficiale
Flat base for surface mount
Base pour montage à plat



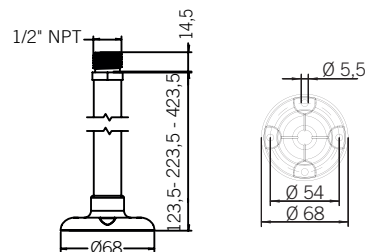
PR
Prolunga 10 cm
10 cm extension
10 cm de prolongation



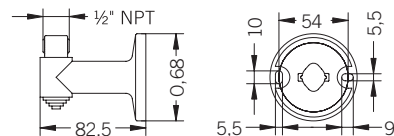
KIT
Base piana per montaggio superficiale con estensione di 10 cm
Flat base for surface mount with 10 cm extension
Base pour montage à plat avec 10 cm de prolongation



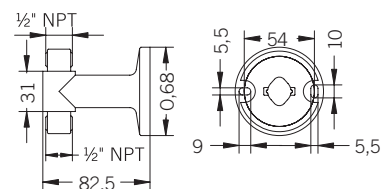
KIT SS L10 - L20 - L40
Base piana per montaggio superficiale con estensione in acciaio INOX di 10 cm (disponibile anche con misura 20 e 40 cm)
Flat base for surface mount with 10 cm stainless steel extension (also available in 20 and 40 cm sizes)
Base pour montage à plat avec extension en acier inoxydable de 10 cm (aussi disponible en taille de 20 et 40 cm)



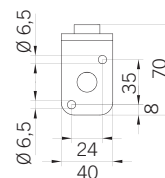
BP1
Base parete per montaggio laterale
Wall base for side mount
Support fixation en applique (à filetage simple)



BP2
Base parete per montaggio laterale di 2 colonne
Wall base for side mount of 2 towers
Support fixation en applique (à double filetage) pour 2 colonnes lumineuses



SB
Staffa in acciaio INOX per montaggio laterale con pressacavo 1/2" NPT
Stainless steel bracket with 1/2" NPT cable gland
Support en acier inoxydable avec un presse-étoupe 1/2" NPT



M16
Base piana per montaggio superficiale con pressacavo M16
Flat base with M16 cable gland for surface mount
Base pour montage à plat avec presse-étoupe M16

