

SFX 30/60 MM GE

Weidmüller Interfaces GmbH & Co. KG

Postfach 3030

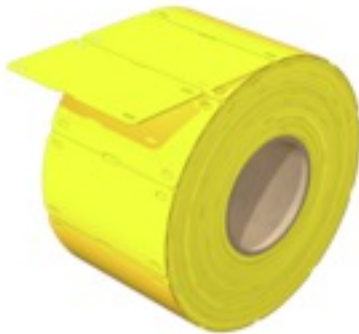
32760 Detmold

Tel. +49 5231 14-0

Fax. +49 5231 14-2083

info@weidmueller.com

www.weidmueller.com



Highly flexible: SFX

SFX markers are the preferred choice for labelling cables if you prefer the classic cable tie solution. Cables do not always run in a straight line. The material used in SFX markers addresses this fact with highly flexible polyurethane. The marker follows each curve of the cable and latches on with ease.

General ordering data

Version	SlimFix, Conductor and cable markers, 7 - , 60 x 32 mm, yellow
Order No.	2005420000
Type	SFX 30/60 MM GE
GTIN (EAN)	4050118390230
Qty.	300 pc(s).
compatible printer	2599430000 2599440000

SFX 30/60 MM GE

Weidmüller Interfaces GmbH & Co. KG

Postfach 3030

32760 Detmold

Tel. +49 5231 14-0

Fax. +49 5231 14-2083

info@weidmueller.com

www.weidmueller.com

Technical data

Dimensions and weights

Depth	0.6 mm	Depth (inches)	0.024 inch
Height	60 mm	Height (inches)	2.362 inch
Width	32 mm	Width (inches)	1.26 inch
Net weight	1.483 g		

Temperatures

Operating temperature range	-40...90 °C
-----------------------------	-------------

General data

Colour	yellow	Halogen	No
Material	Polyurethane	Number per roll	300
Operating temperature range	-40...90 °C	Operating temperature range, max.	90 °C
Operating temperature range, min.	-40 °C	Size of labelling field	45 x 29.5 mm
UL 94 flammability rating	HB	Version	halogen-free
Width	32 mm		

Conductor and cable markers

Cable tie passage	Flat	Conductor O.D.	7 -
Conductor O.D., min.	7 mm	Halogen	No
Suitable cable tie	Plastic	Text field height	29.5 mm
Text field width	45 mm		

Classifications

ETIM 6.0	EC001530	ETIM 7.0	EC001530
ETIM 8.0	EC001530	ECLASS 9.0	27-40-04-01
ECLASS 9.1	27-40-04-01	ECLASS 10.0	27-40-04-01
ECLASS 11.0	27-28-11-02	ECLASS 12.0	27-28-11-02

Approvals

ROHS	Conform
------	---------

Downloads

Engineering Data	CAD data – STEP
Engineering Data	EPLAN, WSCAD, Zuken E3.S
Catalogues	Catalogues in PDF-format

Data sheet

SFX 30/60 MM GE

Weidmüller Interfaces GmbH & Co. KG

Postfach 3030

32760 Detmold

Tel. +49 5231 14-0

Fax. +49 5231 14-2083

info@weidmueller.com

www.weidmueller.com

Drawings

