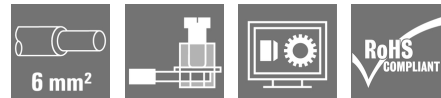
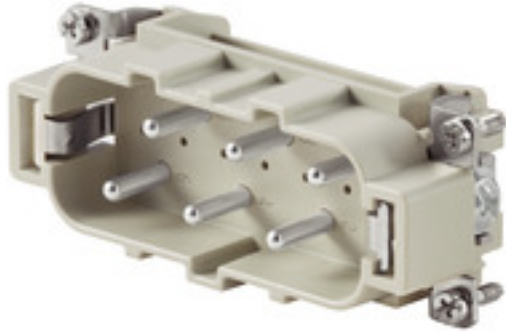


**HDC insert
HDC HSB 6 MS**

Weidmüller Interface GmbH & Co. KG
Klingenbergstraße 26
D-32758 Detmold
Germany
Fon: +49 5231 14-0
Fax: +49 5231 14-292083
www.weidmueller.com



The HSB series enables you to carry 35A per contact simultaneously. Assembly with screw connections, for secure and reliable connections.

The wire connection level is designed for screw connections. All screw connection elements are equipped with wire protection.

Screw connection

General ordering data

Type	HDC HSB 6 MS
Order No.	1498700000
Version	HDC insert, Pin, 400 V, 35 A, Number of poles: 6, Screw connection, Size: 6
GTIN (EAN)	4008 190035 136
Qty.	1 pc(s).

Creation date July 8, 2020 8:02:38 AM CEST

Catalogue status 08.07.2020 / We reserve the right to make technical changes.

**HDC insert
HDC HSB 6 MS**

Weidmüller Interface GmbH & Co. KG
 Klingenbergstraße 26
 D-32758 Detmold
 Germany
 Fon: +49 5231 14-0
 Fax: +49 5231 14-292083
 www.weidmueller.com

Technical data**Dimensions and weights**

Width	34	Width (inches)	1.339 inch
Height	34 mm	Height (inches)	1.339 inch
Depth	84.5 mm	Depth (inches)	3.327 inch
Net weight	82 g		

Temperatures

Limit temperature	-40 °C ... 125 °C
-------------------	-------------------

Environmental Product Compliance

REACH SVHC	Lead 7439-92-1, Potassium perfluorobutane sulfonate 29420-49-3
------------	--

Dimensions

Height of plug	34 mm	Total length base	84.5 mm
----------------	-------	-------------------	---------

General data

Conductor cross-section	6 mm ²	Insulating material	PC glass-fibre reinforced (UL-listed and railway- certified)
Insulating material group	IIIa	Insulation strength	10 ¹⁰ Ω
Material	Copper alloy	Max. torque for main contact	1.5 Nm
Min. torque for main contact	1.2 Nm	Number of poles	6
Plugging cycles, silver	≥ 500	Pollution severity	3
Rated current (DIN EN 61984)	35 A	Rated impulse voltage (DIN EN 61984)	6 kV
Rated voltage (DIN EN 61984)	400 V	Rated voltage according to UL/CSA	600 V AC/DC
Series	HSB	Size	6
Surface finish	Silver passivated	Type	Pin
UL 94 flammability rating	V-0	Volume resistance	≤ 2mΩ

Connection data PE

Blade size, crosshead	Gr. PZ2	Blade size, slotted (PE connection)	1 x 5.5
Connection type PE	Screw connection	Fixing screw	M 5
Rated cross-section	6 mm ²	Stripping length PE connection	10 mm
Tightening torque, max. PE connection	2.5 Nm	Tightening torque, min. PE connection	2 Nm
Wire connection cross section, finely stranded, max.	6 mm ²	Wire connection cross-section, finely stranded with wire-end ferrules DIN 46228/4, max.	6 mm ²
Wire connection cross-section, finely stranded with wire-end ferrules DIN 46228/4, min.	0.5 mm ²	Wire connection cross-section, finely stranded, min.	0.5 mm ²
Wire cross section, AWG (PE), max.	AWG 10	Wire cross section, AWG (PE), min.	AWG 20
Wire cross-section, solid, max.	6 mm ²	Wire cross-section, solid, min.	0.5 mm ²

**HDC insert
HDC HSB 6 MS**

Weidmüller Interface GmbH & Co. KG
 Klingenbergstraße 26
 D-32758 Detmold
 Germany
 Fon: +49 5231 14-0
 Fax: +49 5231 14-292083
 www.weidmueller.com

Technical data

Version

Blade size	size PZ 1	Blade size, slotted (screw connection)	SD 0.8 x 4.0
Clamping screw	M 4	Conductor cross-section, max.	6 mm ²
Conductor cross-section, min.	0.5 mm ²	Material	Copper alloy
Max. torque for main contact	1.5 Nm	Min. torque for main contact	1.2 Nm
Size	6	Stripping length, rated connection	11 mm
Surface finish	Silver passivated	Type of connection	Screw connection
Volume resistance	≤ 2mΩ	Wire connection cross section AWG, max.	AWG 10
Wire connection cross section AWG, min.	AWG 20	Wire connection cross section, finely stranded, max.	6 mm ²
Wire connection cross-section, finely stranded with wire-end ferrules DIN 46228/4, max.	6 mm ²	Wire connection cross-section, finely stranded with wire-end ferrules DIN 46228/4, min.	0.5 mm ²
Wire connection cross-section, finely stranded, min.	0.5 mm ²	Wire cross-section, solid, max.	6 mm ²
Wire cross-section, solid, min.	0.5 mm ²		

Classifications

ETIM 6.0	EC000438	ETIM 7.0	EC000438
eClass 9.0	27-44-02-05	eClass 9.1	27-44-02-05
eClass 10.0	27-44-02-05	UNSPSC	30-21-18-01

Approvals

Approvals



ROHS Conform

Downloads

Brochure/Catalogue	CAT 3 HDC 17/18 EN FL FIELDWIRING EN
Engineering Data	EPLAN, WSCAD, Zuken E3.S
Engineering Data	STEP

**HDC insert
HDC HSB 6 MS**

Weidmüller Interface GmbH & Co. KG
Klingenbergstraße 26
D-32758 Detmold
Germany
Fon: +49 5231 14-0
Fax: +49 5231 14-292083
www.weidmueller.com

Drawings