

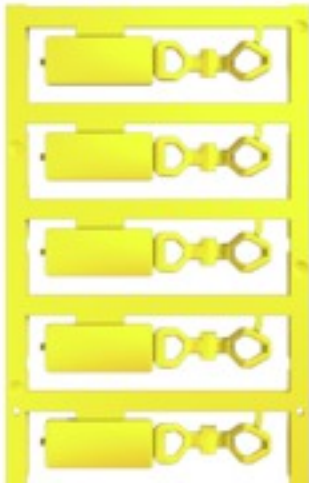
DMC 12/27 MC NE GE**Weidmüller Interface GmbH & Co. KG**

Klingenbergstraße 26

D-32758 Detmold

Germany

www.weidmueller.com



The DMC markers can be used for labelling switching devices or sub-assemblies. The large (12 x 27 mm) marking surface offers sufficient room for information describing the device and its function. Only one tag size for cable cross-sections from 0.5 – 10 mm² enables use on both multi-core control cables and single cores.

For custom printing: Please send us a file of our labelling software M-Print PRO or M-Print PRO Online (without installation) for your labelling specifications.

General ordering data

Version	DMC, Device markers, 1.5 - 7.5 mm, 12 x 27 mm, yellow
Order No.	1018190000
Type	DMC 12/27 MC NE GE
GTIN (EAN)	4032248729241
Qty.	50 pc(s).
compatible printer	2715590000 2438520000 2438510000

Creation date June 3, 2022 10:36:25 AM CEST

Catalogue status 20.05.2022 / We reserve the right to make technical changes.

DMC 12/27 MC NE GE

Weidmüller Interface GmbH & Co. KG

Klingenbergstraße 26

D-32758 Detmold

Germany

www.weidmueller.com

Technical data

Dimensions and weights

Depth	5 mm	Depth (inches)	0.197 inch
Height	12 mm	Height (inches)	0.472 inch
Width	27 mm	Width (inches)	1.063 inch
Net weight	2.28 g		

Temperatures

Operating temperature range	-40...100 °C
-----------------------------	--------------

General data

Colour	yellow	Halogen	No
Material	Polyamide 66	Material colour according to resistance code	4
Number of markers per combination	1 MultiCard = Device markers	Operating temperature range	-40...100 °C
Operating temperature range, max.	100 °C	Operating temperature range, min.	-40 °C
UL 94 flammability rating	V-2	Width	27 mm

Device markers

Halogen	No
---------	----

Classifications

ETIM 6.0	EC001530	ETIM 7.0	EC001530
ETIM 8.0	EC001530	ECLASS 9.0	27-40-04-01
ECLASS 9.1	27-40-04-01	ECLASS 10.0	27-40-04-01
ECLASS 11.0	27-28-11-02	ECLASS 12.0	27-28-11-02

Approvals

ROHS	Conform
------	---------

Downloads

Engineering Data	CAD data – STEP
Engineering Data	EPLAN, WSCAD, Zuken E3.S
Catalogues	Catalogues in PDF-format

Data sheet

DMC 12/27 MC NE GE

Weidmüller Interface GmbH & Co. KG
Klingenbergstraße 26
D-32758 Detmold
Germany

www.weidmueller.com

Drawings

